

MAXepoxy

PROTECTION & REPAIR TECHNOLOGY

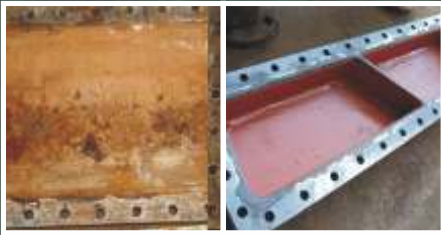
PROTECTION AGAINST ABRASION, EROSION, CORROSION AND CHEMICAL ATTACK



METAL REPAIR, REBUILDING, ABRASION, CORROSION, AND CHEMICAL PROTECTION



Repair of Heat Exchanger



Rotor repair



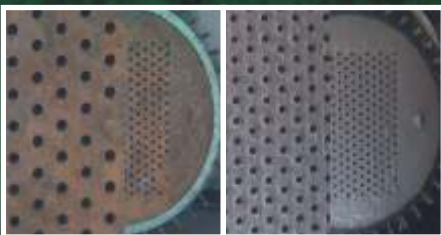
Pump repair



Pump repair



Repair of heat exchanger



Rebuilding and ceramic coating against abrasion



Reconstruction of axles and covers



Rebuilding and ceramic coating against abrasion



Ceramic coating on rotor Sulzer



Crusher cover repair



Ceramic coating with resistance to 240°C



Ceramic naval coating



Ceramic coating on heat exchanger



Anti-abrasion coating Rebuilding of hydroelectric plant



MAXepoxy

PROTECTION & REPAIR TECHNOLOGY

MAXepoxy protection and repair technology products are special cold-welding type polymers that rebuild, repair, and protect providing high mechanical and chemical resistance.

The MAXepoxy can be used in repairs of various materials such as steel, iron, aluminum, bronze, elastomers, ceramics, etc. for the most diverse types of damages on equipment such as cracks, erosion, failure of casting, abrasion, corrosion, cavitation and chemical attacks.

MAXepoxy is used by Refineries, Steel, Mining, Petrochemical Industries, Pulp and Paper, On/Offshore Oil and Gas, Cement, Methanol, among others.



21625 Rhodes Rd, Spring,
Texas, 77388

T: +1 346 331 6200

info@technofink.com



maxepoxy.com